

Multi-Server Monitoring System (Vers. 3.10)

Description:

- Extremely simple and easy to use and cheap at the same time
- A very useful tool for a real-time, continuous control of servers activities and connections between them
- An ideal complement to other expensive and sophisticated control systems based on SNMP protocol
- Can be use in local networks as well as in wide-area networks
- Requires only a simple agent running on every controlled system
- For communication uses TCP/IP protocol and a port number specified by administrator
- Main system module displaying status of servers works continuously on selected Netware server
- Names of servers to which the connections are correct are displayed in green, to which a lack of connection is between 15 and 30 minutes in violet, and those with a lack of connection above 30 minutes in red
- Available version for 3 (free), 10 and 100 servers.

Usage:

System consists of DWAGENT.NLM module running on every controlled server and DWMON.NLM running on main managing server. For demo purposes it is possible to start both modules on one server.

Command to start DWAGRNT.NLM is following:

DWAgent /Nservername /Aipaddress /Pport
where

/N - is the name used by managing server to identify every controlled server. It is not necessary to keep the same server name as it is set in NDS.

Maximum length of this name is 12 characters. In case of ommiting this parameter the default value will be assigned as exists in NDS

/A is an IP address of the managing server. Requierd parameter.

/P is an IP address port number of the managing server. When it is ommitted the default value is set to 2100.

Command to start DWMON.NLM module (version with 3 servers) is following:

DWMON /N1servername1 /N2servername2 /N3servername3 /Pport
where

/N1 is the name of 1st controlled server. Maximum length is 12 characters

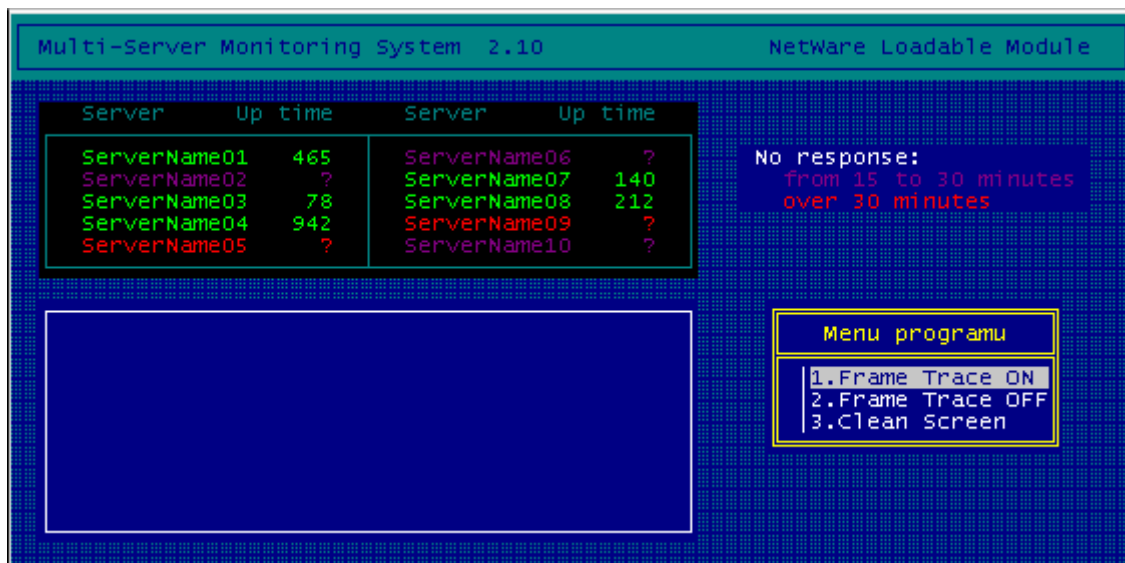
/N2 is the name of 2nd controlled server. Maximum length is 12 characters

/N3 is the name of 3rd controlled server. Maximum length is 12 characters

/P is IP adress port number on which the managing server will be listen to control frames.

While ommitted the default value is set to 2100

Main user interface of DWMON module is as follows:



Send any Comments and Suggestions to: djack@djack.com.pl

<http://www.djack.com.pl>